

New Forest District Council is committed to reducing speeding across the whole district.

Speed Indicator Devices (SIDs) and Speed Detection Radar (SDR) are deployed in the New Forest area in order to gather vehicle speed data that can be used to assess the need for further action.

This includes possible additional enforcement of the speed limit or the deployments of Speed Limit Reminders (SLR). SLRs display the speed limit of the road with a **SLOW DOWN** message.

SID

Speed Indicator Device



- Used to obtain data
- Access data via a modem
- Flashes speed of the vehicle
- Minimum speed = speed limit
- Max speed = speed limit + 15mph
- 1 week each direction

SLR

Speed Limit Reminder



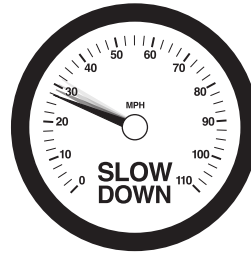
- No data
- No modem
- Larger sign = greater impact
- Flashes the speed limit and SLOW DOWN
- Encourages compliance with speed limit 30/40
- 2-3 weeks each direction

SDR

Speed Detection Radar



- Used to measure speed
- Measures volume
- More discreet, true reflection of road speeds
- We use them to assess the need for traffic calming for on road cycle routes and speed limits
- Site access planning – entrance onto road depends on speed of road



A guide to **speed detection devices**